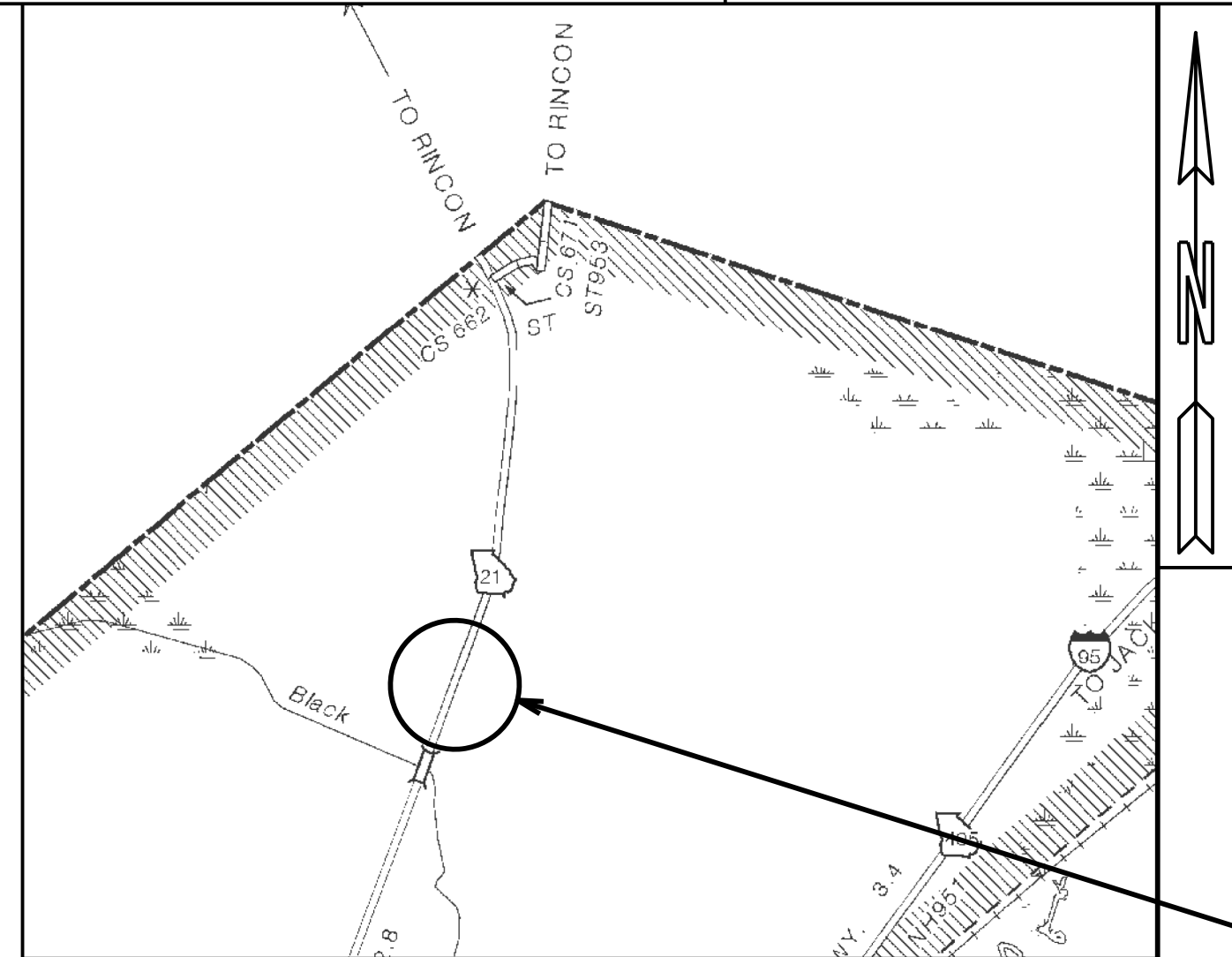
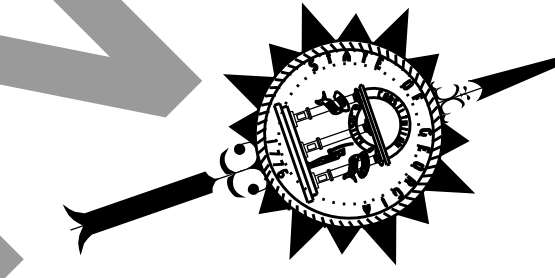


DEPARTMENT OF TRANSPORTATION STATE OF GEORGIA

PLAN AND PROFILE OF PROPOSED SR 21 @ CS 705/PARKSIDE BLVD PEDESTRIAN BRIDGE

FEDERAL ROUTE • N/A
STATE ROUTE • 21
P.J.NO.0013549



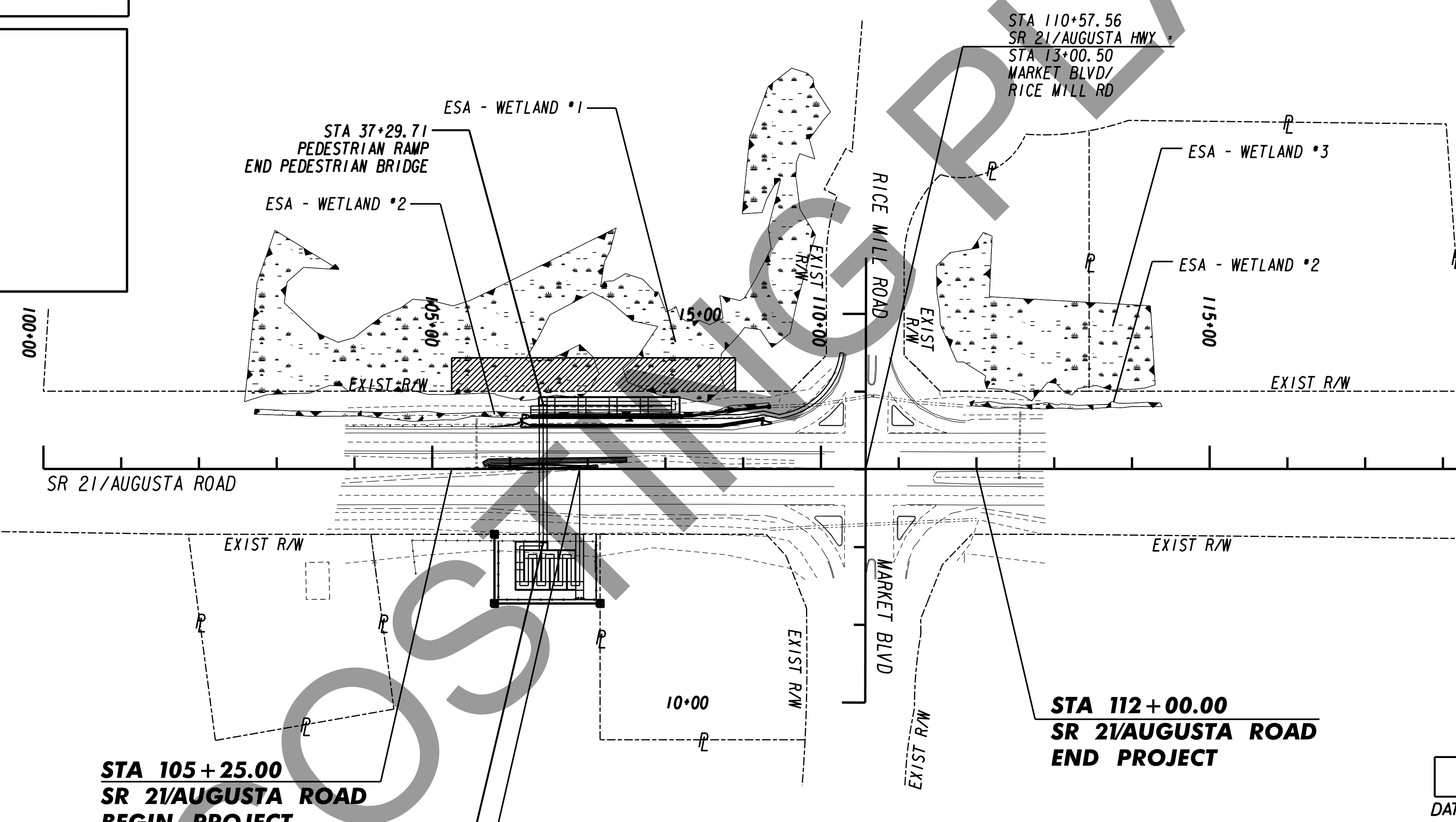
LOCATION SKETCH

DESIGN DATA:
 TRAFFIC A.D.T.: N/A
 TRAFFIC A.D.T.: N/A
 TRAFFIC D.H.V.: N/A
 DIRECTIONAL DIST: N/A
 % TRUCKS: N/A
 24 HR. TRUCKS %: N/A
 SPEED DESIGN: 55 mph

LOCATION & DESIGN APPROVAL DATE:
FUNCTIONAL CLASS:
 THIS PROJECT IS 100% IN CHATHAM COUNTY AND IS 100% IN CONG. DIST. NO. 5
PROJECT DESIGNATION:
 DESIGNED IN ENGLISH UNITS.

THIS PROJECT HAS BEEN PREPARED USING THE HORIZONTAL GEORGIA COORDINATE SYSTEM OF 1984 (HAD 1983/94 WEST ZONE, AND THE NORTH AMERICAN VERTICAL DATUM (NAVD) OF 1988.

THE DATA, TOGETHER WITH ALL OTHER INFORMATION SHOWN ON THESE PLANS OR IN ANYWAY INDICATED THEREBY, WHETHER BY DRAWINGS OR NOTES, OR IN ANY OTHER MANNER, ARE BASED UPON FIELD INVESTIGATIONS AND ARE BELIEVED TO BE INDICATIVE OF ACTUAL CONDITIONS. HOWEVER, THE SAME ARE SHOWN AS INFORMATION ONLY, ARE NOT GUARANTEED, AND DO NOT BIND THE DEPARTMENT OF TRANSPORTATION IN ANY WAY. THE ATTENTION OF BIDDER IS SPECIFICALLY DIRECTED TO SUBSECTIONS 102.04, 102.05, AND 104.03 OF THE SPECIFICATIONS.



NOTE:
 ALL REFERENCES IN THIS DOCUMENT, WHICH INCLUDES ALL PAPERS, WRITINGS, DOCUMENTS, DRAWINGS, OR PHOTOGRAPHS USED, OR TO BE USED IN CONNECTION WITH THIS DOCUMENT, TO "STATE HIGHWAY DEPARTMENT OF GEORGIA," "STATE HIGHWAY DEPARTMENT," "GEORGIA STATE HIGHWAY DEPARTMENT," "HIGHWAY DEPARTMENT," OR "DEPARTMENT" WHEN THE CONTEXT THEREOF MEANS THE STATE HIGHWAY DEPARTMENT OF GEORGIA, AND SHALL BE DEEMED TO MEAN THE DEPARTMENT OF TRANSPORTATION.

ARCADIS Design & Consultancy for natural and built assets
 2410 Paces Ferry Road, Suite 400
 Atlanta, Georgia 30339
 Tel: 770/431-8666
 Fax: 770/435-2666

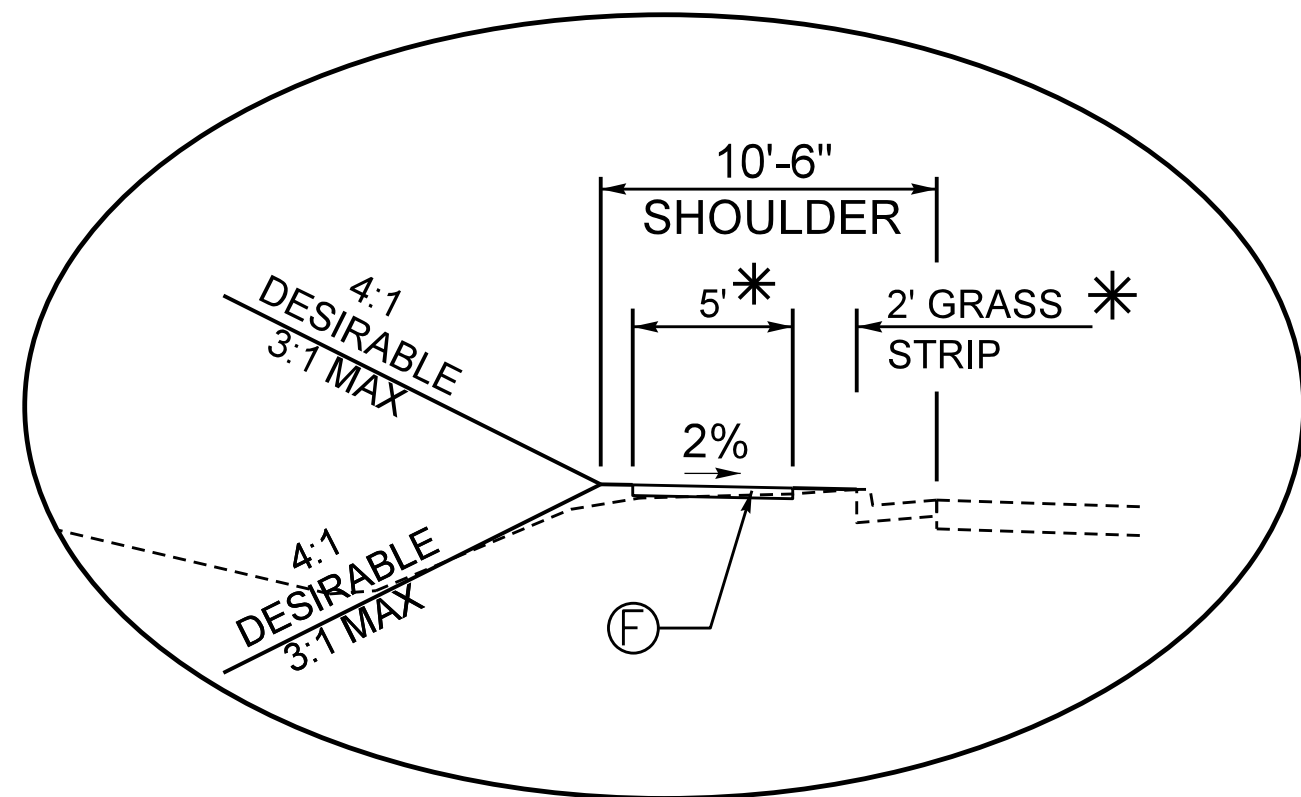
PREPARED BY: _____
 DESIGN
 RECOMMENDED FOR SUBMISSION BY: _____
 DESIGN
 SUBMITTED BY: _____
 STATE DESIGN ENGINEER

DATE	CHIEF ENGINEER
PLANS COMPLETED	- -
REVISIONS	

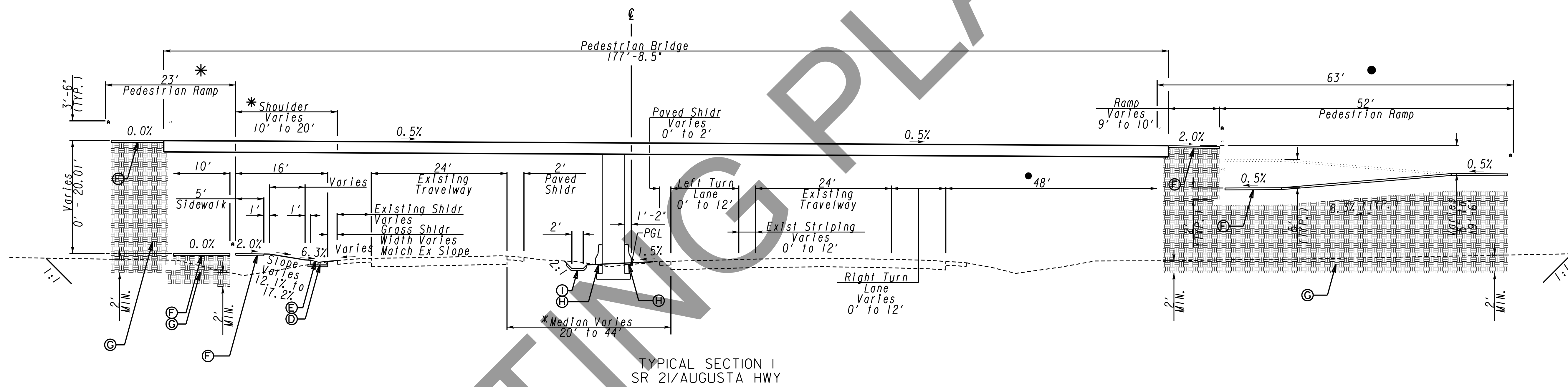
LENGTH OF PROJECT	COUNTY No. 51 Project No. 0013549
MILES	
NET LENGTH OF ROADWAY	0.089
NET LENGTH OF BRIDGES	0.000
NET LENGTH OF PROJECT	0.089
NET LENGTH OF EXCEPTIONS	0.000
GROSS LENGTH OF PROJECT	0.089



SHOULDER DETAIL LT



STA 109+25.81 TO STA 110+29.46 LT



TYPICAL SECTION I
 SR 21/AUGUSTA HWY
 STA 104+98.88 TO STA 110+29.46

DESCRIPTION OF PROPOSED IMPROVEMENTS (LT)

*INSTALL 5' CONC SIDEWALK W/8' BUFFER STA 106+36.71 TO STA 108+70.00 LT
 TRANSITION 5' CONC SIDEWALK W/8' BUFFER TO 5' CONC SIDEWALK W/3.6' BUFFER STA 108+70.00 TO 108+97.44
 INSTALL 5' CONC SIDEWALK W/3.6' BUFFER STA 108+97.44 TO STA 109+25.81
 TRANSITION 5' CONC SIDEWALK W/3.6' BUFFER TO 5' CONC SIDEWALK W/2' BUFFER STA 109+25.81 TO 109+46.71

INSTALL CONC V GUTTER STA 106+26.71 TO STA 109+26.85
 INSTALL 5' CONC SIDEWALK W/2' BUFFER STA 109+46.71 TO 110+29.46
 INSTALL PAVED SHOULDER (WIDTH VARIES) STA 106+13.66 TO STA 109+23.LT
 INSTALL 10' PEDESTRIAN RAMP STA 106+36.71 TO STA 108+18.71 (SEE SHOULDER DETAIL 1)

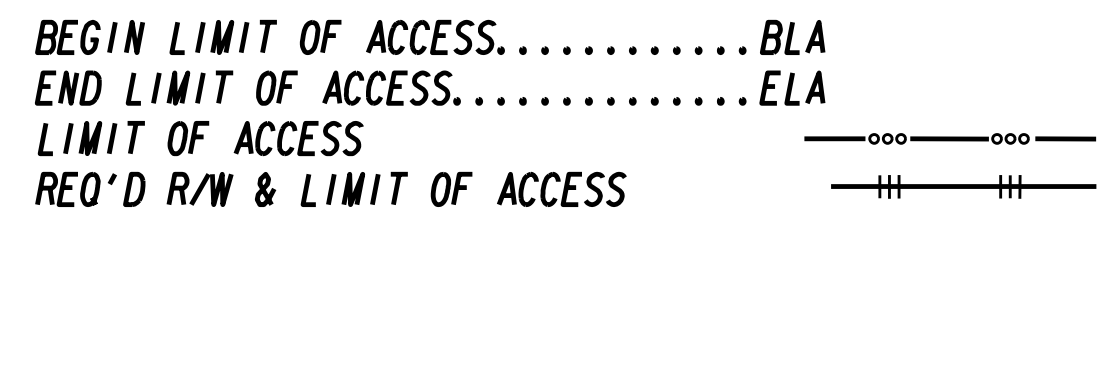
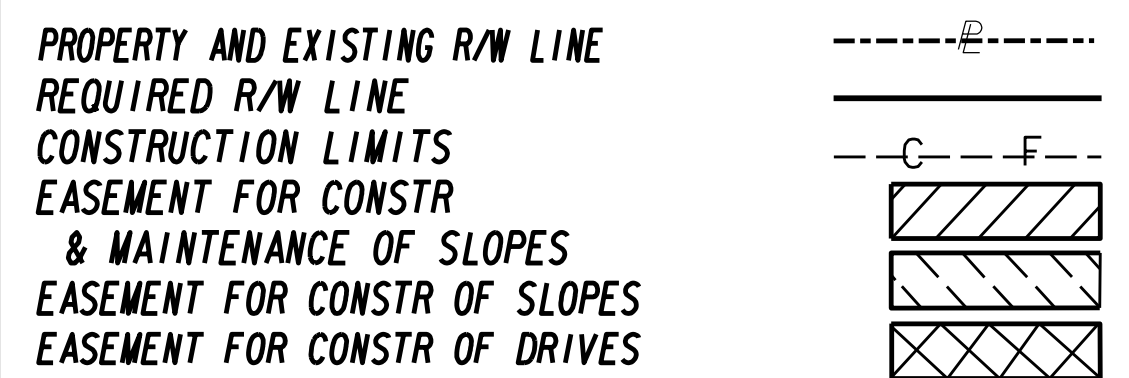
DESCRIPTION OF PROPOSED IMPROVEMENTS (MEDIAN)

*INSTALL TYPE P ATTENUATOR STA 105+72.38 TO STA 105+92.88 STA 106+92.54 TO STA 107+13.04
 INSTALL TYPE 7C SIDE BARRIER STA 105+92.88 TO STA 106+92.54
 INSTALL 4' PAVED DITCH STA 105+65.00 TO STA 107+50.00

DESCRIPTION OF PROPOSED IMPROVEMENTS (RT)

● INSTALL 10' PEDESTRIAN RAMP STA 106+06.71 TO STA 106+84.71 (SEE SHOULDER DETAIL 2)

- Ⓧ GR AGGR BASE CRS, 4 INCH, INCL MATL
- Ⓧ CONCRETE V GUTTER
- Ⓧ CONC SIDEWALK/WALKWAY/RAMP, 4 IN
- Ⓧ MSE WALL BACKFILL MATERIAL
- Ⓧ CONCRETE SIDE BARRIER, TYPE 7C
- Ⓧ PLAIN CONC DITCH PAVING, 4 IN

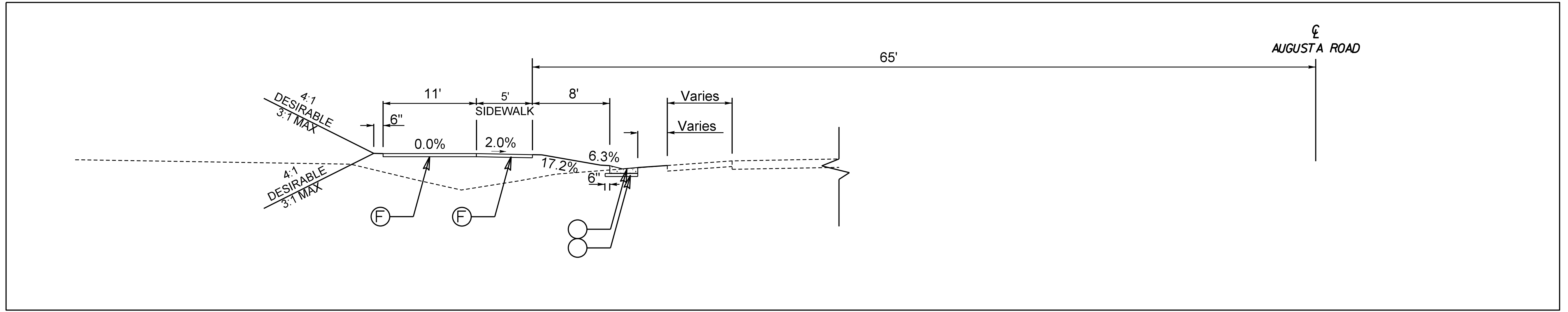


N. T. S.

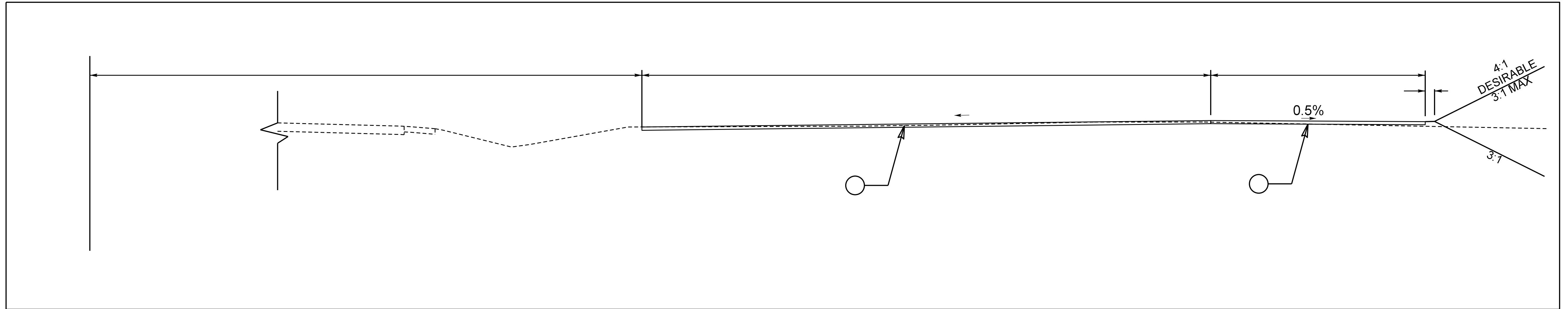
REVISION DATES	

STATE OF GEORGIA
 DEPARTMENT OF TRANSPORTATION
 OFFICE: **TYPICAL SECTIONS**
 SR 21 @ CS 705/PARKSIDE BLVD
 PEDESTRIAN BRIDGE

DRAWING No. **05-001**



STA 106+26.71 TO STA 106+36.71 LT



STA 106+84.71 TO STA 106+94.71 RT

○
○
○
○
○

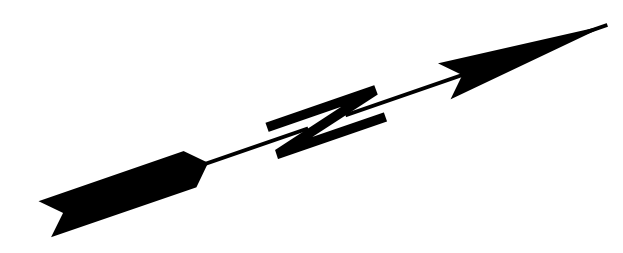
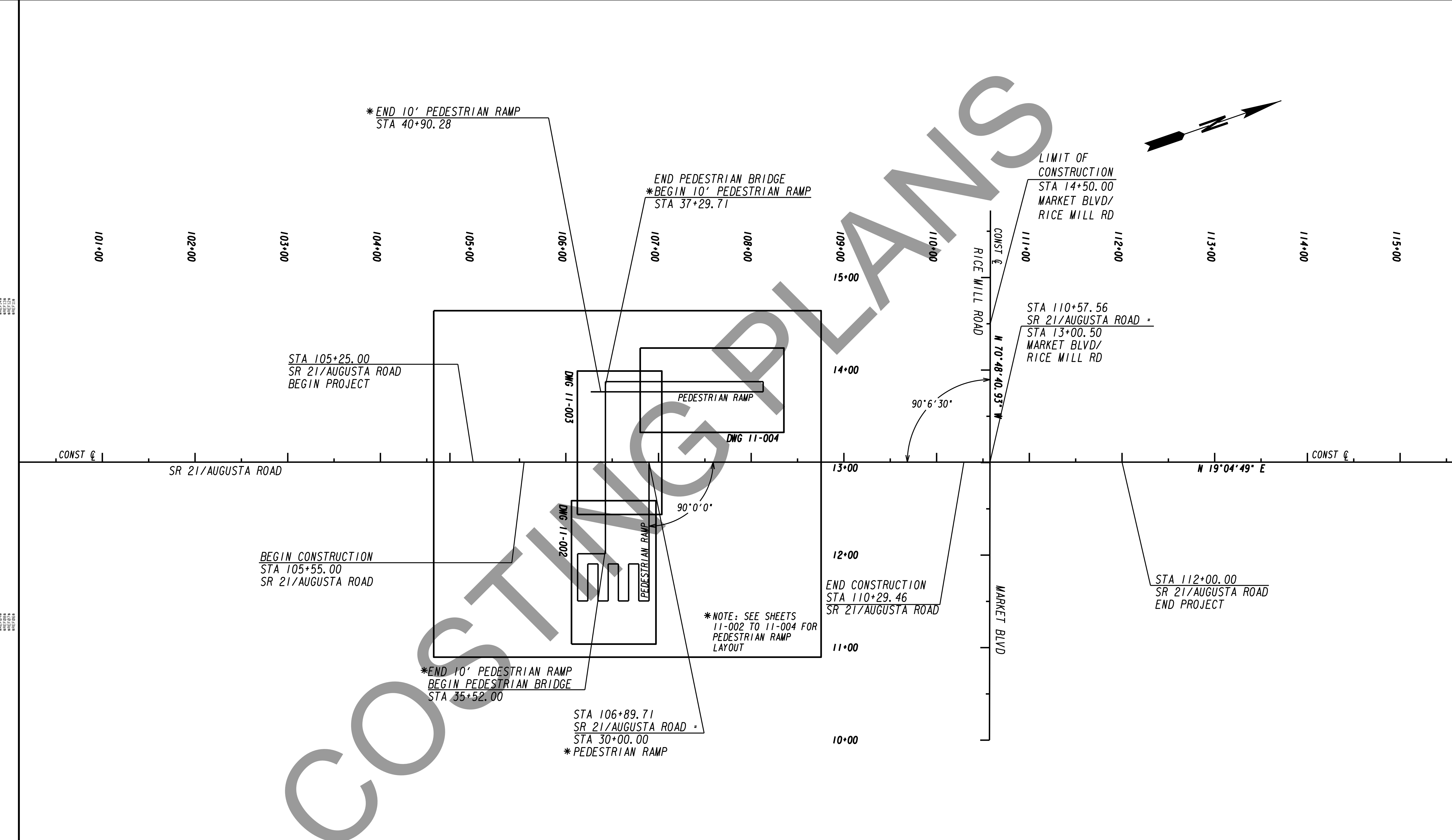


N. T. S.

REVISION DATES		

STATE OF GEORGIA
 DEPARTMENT OF TRANSPORTATION
 OFFICE:
TYPICAL SECTIONS
 SR 21 @ CS 705/PARKSIDE BLVD
 PEDESTRIAN BRIDGE

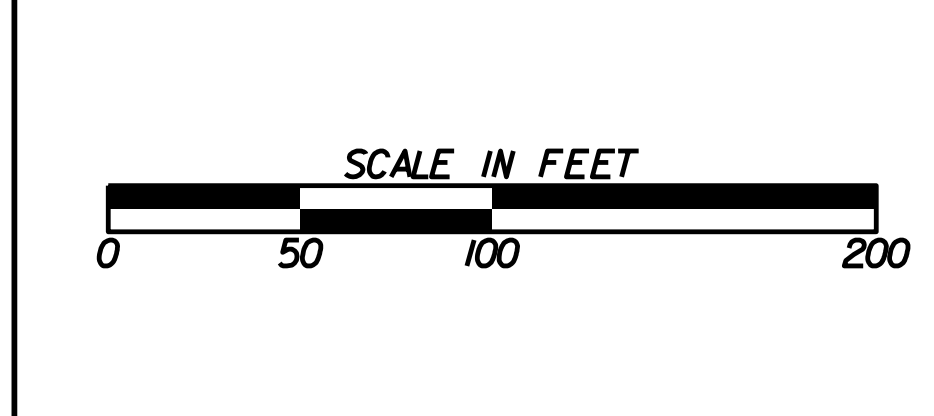
DRAWING No.
05-002



COASTAL PLANNING

PROPERTY AND EXISTING R/W LINE	---
REQUIRED R/W LINE	---
CONSTRUCTION LIMITS	---
EASEMENT FOR CONSTR & MAINTENANCE OF SLOPES	▨
EASEMENT FOR CONSTR OF SLOPES	▩
EASEMENT FOR CONSTR OF DRIVES	▧

BEGIN LIMIT OF ACCESS.....BLA	---
END LIMIT OF ACCESS.....ELA	---
LIMIT OF ACCESS	---
REQ'D R/W & LIMIT OF ACCESS	---

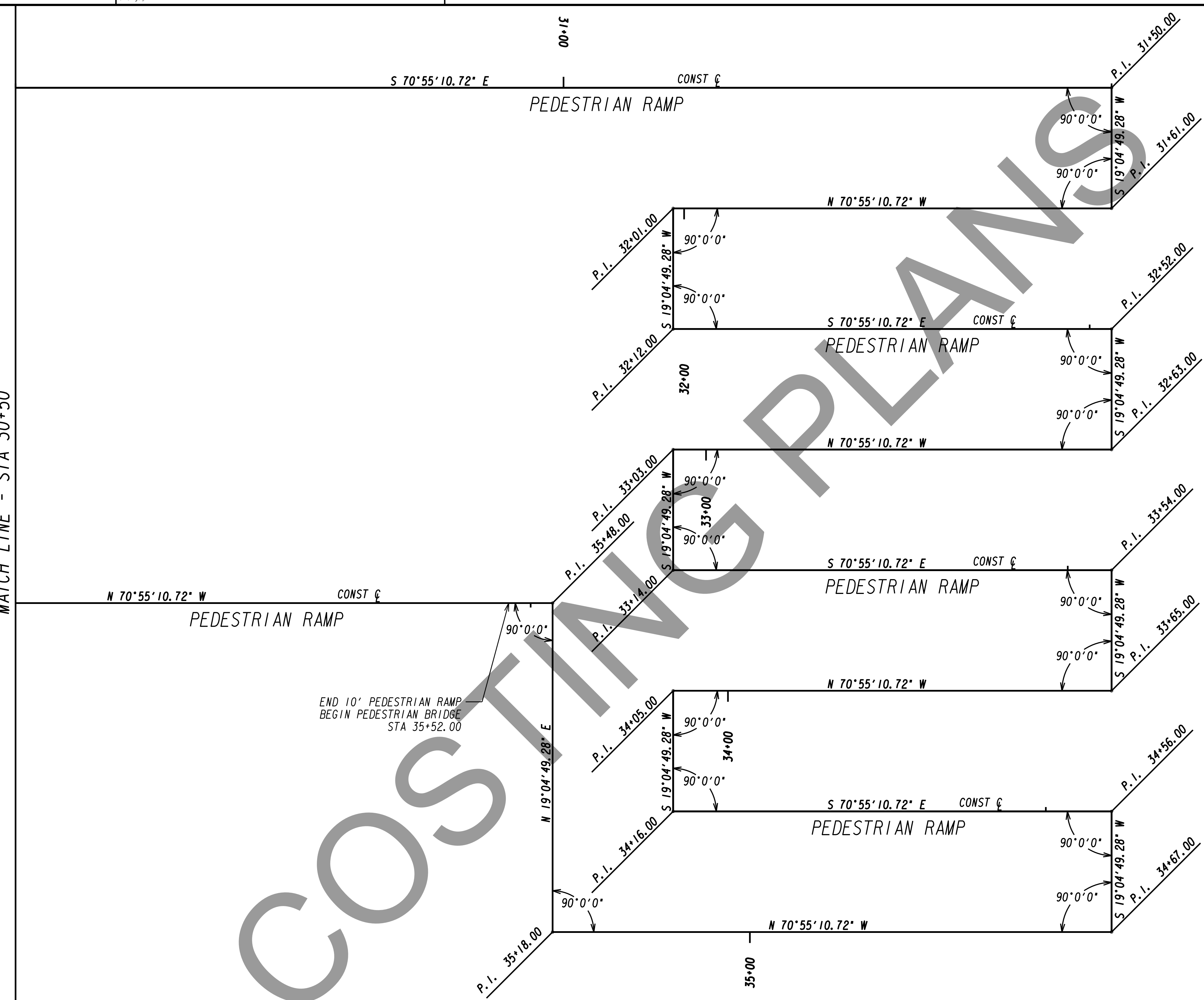


REVISION DATES	

STATE OF GEORGIA
 DEPARTMENT OF TRANSPORTATION
 OFFICE:
CONSTRUCTION LAYOUT
SR 21/AUGUSTA HWY
 SR 21 @ CS 705/PARKSIDE BLVD
 PEDESTRIAN BRIDGE

DRAWING No.
11-001

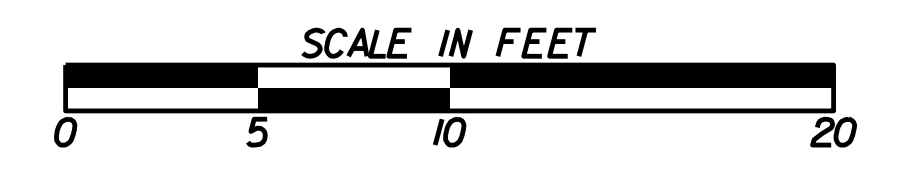
MATCH LINE - STA 30+50



END 10' PEDESTRIAN RAMP
 BEGIN PEDESTRIAN BRIDGE
 STA 35+52.00

PROPERTY AND EXISTING R/W LINE	-----E-----
REQUIRED R/W LINE	—————
CONSTRUCTION LIMITS	—G—F—
EASEMENT FOR CONSTR & MAINTENANCE OF SLOPES	
EASEMENT FOR CONSTR OF SLOPES	
EASEMENT FOR CONSTR OF DRIVES	

BEGIN LIMIT OF ACCESS.....BLA	—o—o—o—o—
END LIMIT OF ACCESS.....ELA	—o—o—o—o—
LIMIT OF ACCESS	— — — — —
REQ'D R/W & LIMIT OF ACCESS	— — — — —



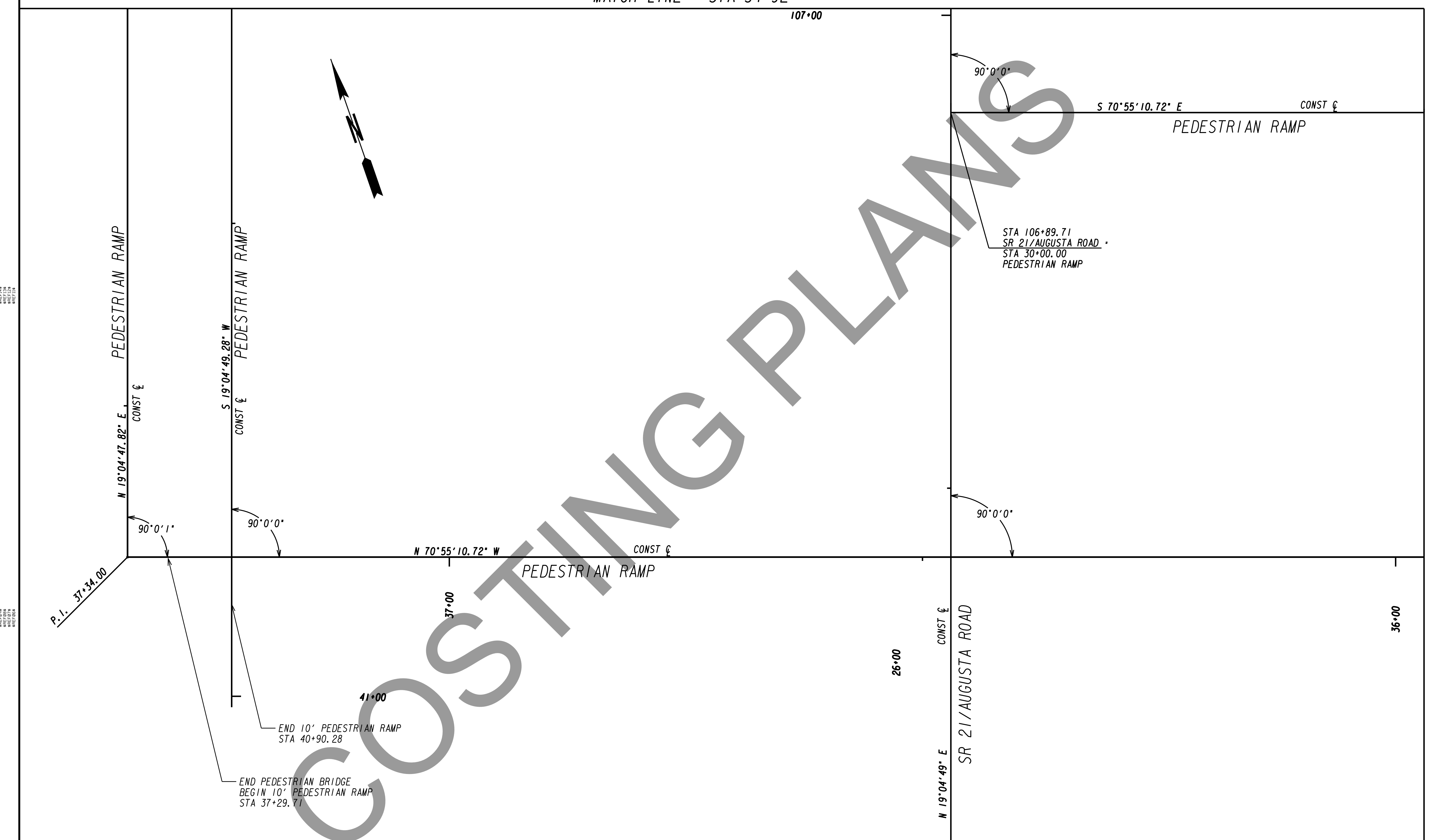
REVISION DATES	

STATE OF GEORGIA
 DEPARTMENT OF TRANSPORTATION
 OFFICE:
**CONSTRUCTION LAYOUT
 PEDESTRIAN RAMP/BRIDGE**
 SR 21 @ CS 705/PARKSIDE BLVD
 PEDESTRIAN BRIDGE

DRAWING No.
11-002

MATCH LINE - STA 34+92

107+00



REVISION
DATE
BY
DESCRIPTION

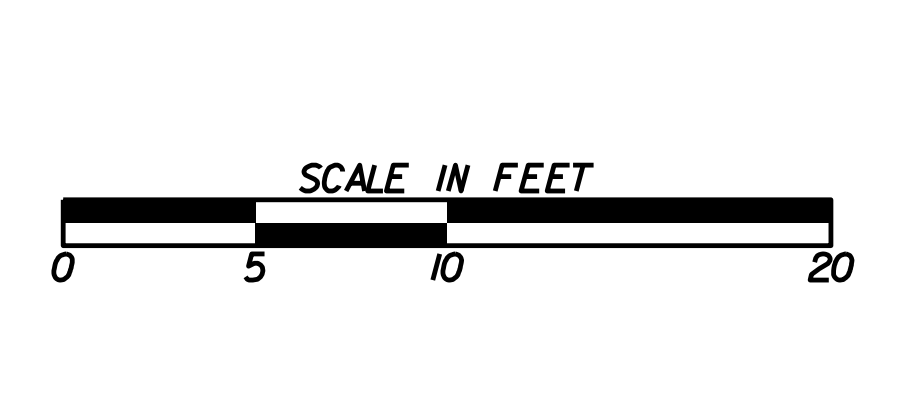
REVISION
DATE
BY
DESCRIPTION

PROPERTY AND EXISTING R/W LINE
 REQUIRED R/W LINE
 CONSTRUCTION LIMITS
 EASEMENT FOR CONSTR
 & MAINTENANCE OF SLOPES
 EASEMENT FOR CONSTR OF SLOPES
 EASEMENT FOR CONSTR OF DRIVES

-----E-----	-----E-----
-----F-----	-----F-----
-----G-----	-----G-----
-----H-----	-----H-----
-----I-----	-----I-----

BEGIN LIMIT OF ACCESS.....BLA
 END LIMIT OF ACCESS.....ELA
 LIMIT OF ACCESS
 REQ'D R/W & LIMIT OF ACCESS

-----	-----
-----	-----
-----	-----
-----	-----



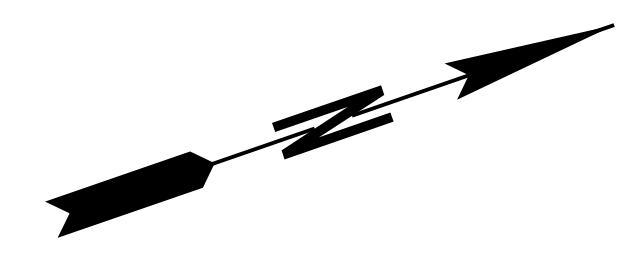
REVISION DATES

STATE OF GEORGIA
 DEPARTMENT OF TRANSPORTATION
 OFFICE:
**CONSTRUCTION LAYOUT
 PEDESTRIAN RAMP/BRIDGE**
 SR 21 @ CS 705/PARKSIDE BLVD
 PEDESTRIAN BRIDGE

DRAWING No.
11-003

MATCH LINE - STA 34+92

COSTING PLANS



38+00

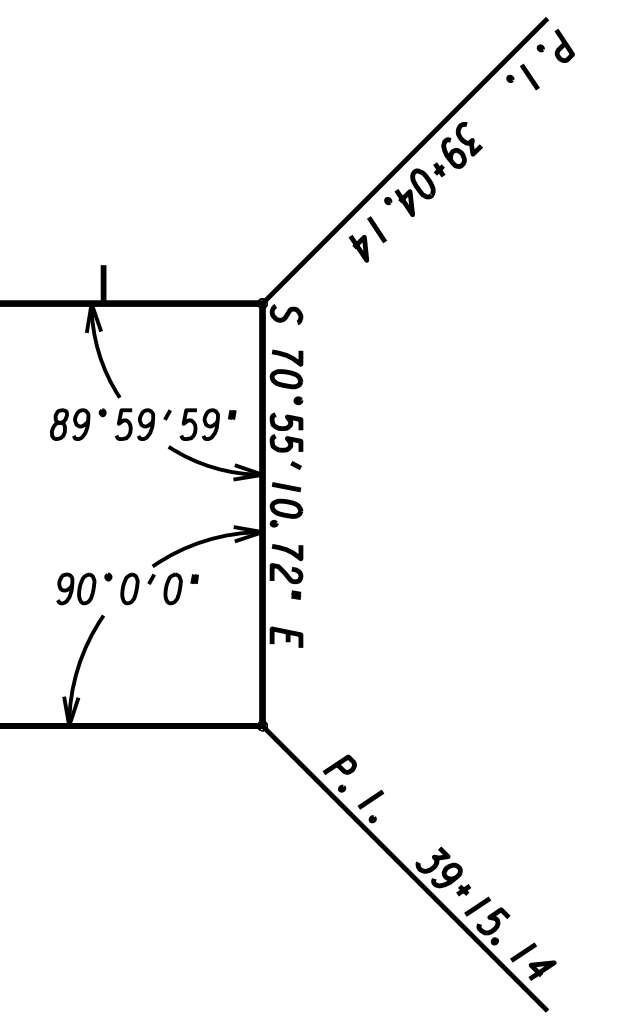
39+00

N 19°04'47.82" E

PEDESTRIAN RAMP

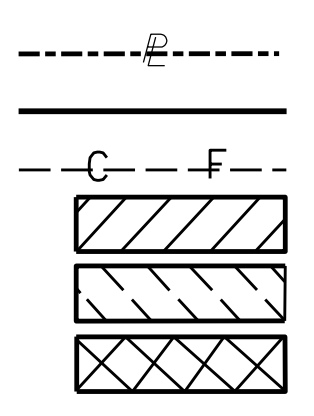
S 19°04'49.28" W

PEDESTRIAN RAMP

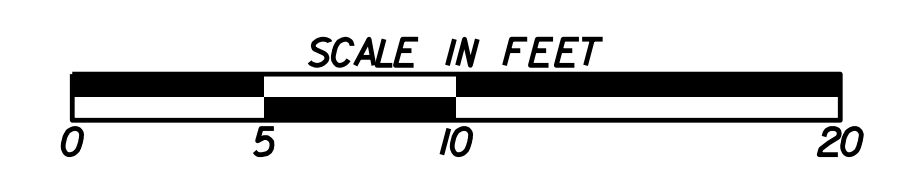


40+00

PROPERTY AND EXISTING R/W LINE
 REQUIRED R/W LINE
 CONSTRUCTION LIMITS
 EASEMENT FOR CONSTR
 & MAINTENANCE OF SLOPES
 EASEMENT FOR CONSTR OF SLOPES
 EASEMENT FOR CONSTR OF DRIVES



BEGIN LIMIT OF ACCESS.....BLA
 END LIMIT OF ACCESS.....ELA
 LIMIT OF ACCESS
 REQ'D R/W & LIMIT OF ACCESS



REVISION DATES		

STATE OF GEORGIA
 DEPARTMENT OF TRANSPORTATION

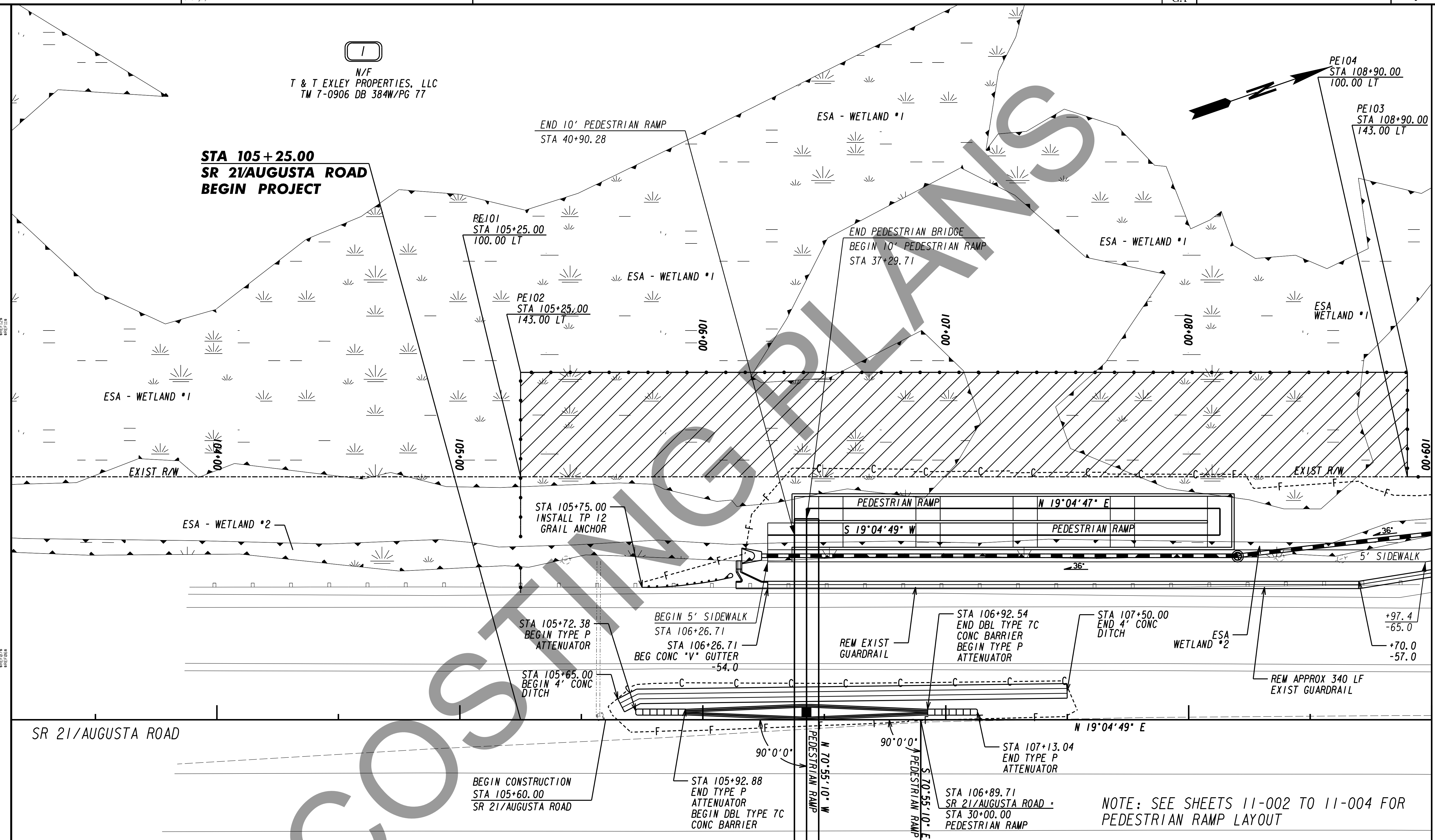
OFFICE:
**CONSTRUCTION LAYOUT
 PEDESTRIAN RAMP/BRIDGE**

SR 21 @ CS 705/PARKSIDE BLVD
 PEDESTRIAN BRIDGE

DRAWING No.
11-004

N/F
 T & T EXLEY PROPERTIES, LLC
 TM 7-0906 DB 384W/Pg 77

**STA 105+25.00
 SR 21/AUGUSTA ROAD
 BEGIN PROJECT**



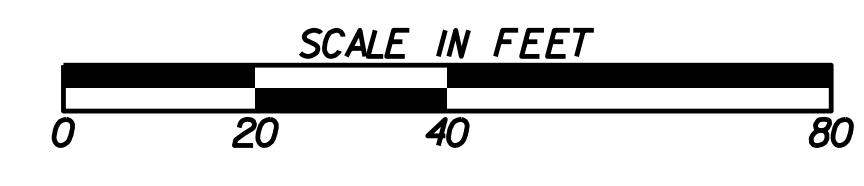
MATCH LINE STA 109+00 - SEE DWG 13-003

MATCH LINE STA 30+50 - SEE DWG 13-002

NOTE: SEE SHEETS 11-002 TO 11-004 FOR PEDESTRIAN RAMP LAYOUT

PROPERTY AND EXISTING R/W LINE	---
REQUIRED R/W LINE	---
CONSTRUCTION LIMITS	---
EASEMENT FOR CONSTR & MAINTENANCE OF SLOPES	▨
EASEMENT FOR CONSTR OF SLOPES	▩
EASEMENT FOR CONSTR OF DRIVES	▧

BEGIN LIMIT OF ACCESS.....BLA	---
END LIMIT OF ACCESS.....ELA	---
LIMIT OF ACCESS	---
REQ'D R/W & LIMIT OF ACCESS	---



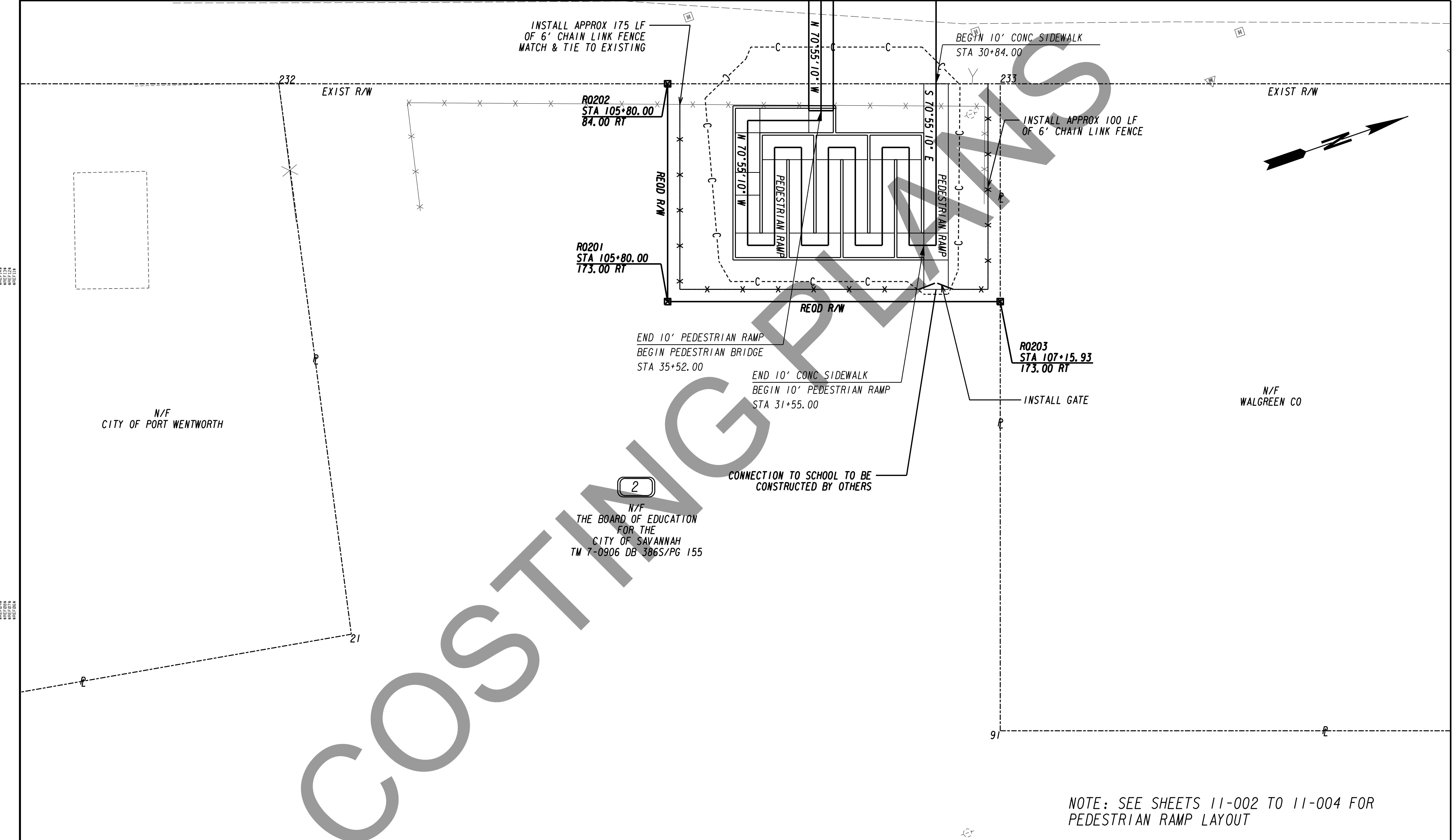
REVISION DATES	

STATE OF GEORGIA
 DEPARTMENT OF TRANSPORTATION
 OFFICE:
MAINLINE PLAN

SR 21 @ CS 705/PARKSIDE BLVD
 PEDESTRIAN BRIDGE

DRAWING No.
13-001

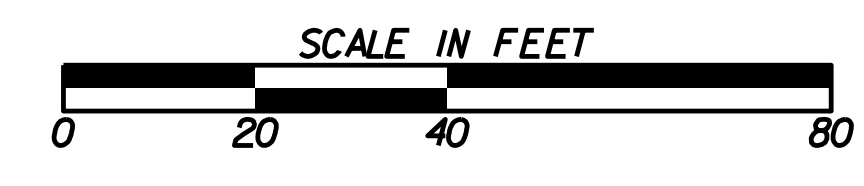
MATCH LINE STA 109+00 - SEE DWG 13-001



NOTE: SEE SHEETS 11-002 TO 11-004 FOR PEDESTRIAN RAMP LAYOUT

PROPERTY AND EXISTING R/W LINE	---
REQUIRED R/W LINE	---
CONSTRUCTION LIMITS	---
EASEMENT FOR CONSTR & MAINTENANCE OF SLOPES	---/---
EASEMENT FOR CONSTR OF SLOPES	---/---
EASEMENT FOR CONSTR OF DRIVES	---/---

BEGIN LIMIT OF ACCESS.....BLA	---
END LIMIT OF ACCESS.....ELA	---
LIMIT OF ACCESS	---
REQ'D R/W & LIMIT OF ACCESS	---



REVISION DATES	

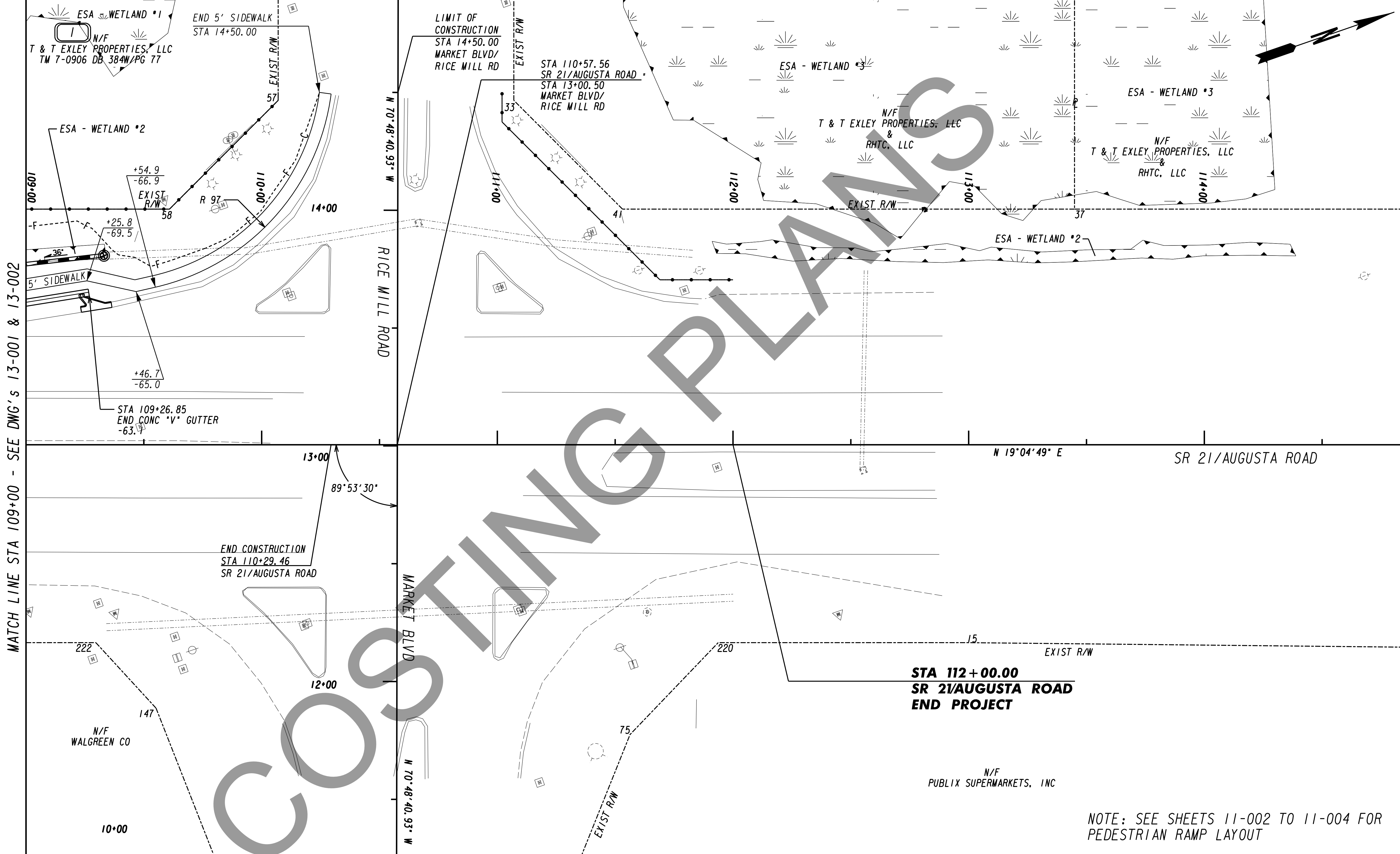
STATE OF GEORGIA
 DEPARTMENT OF TRANSPORTATION

OFFICE: **MAINLINE PLAN**

SR 21 @ CS 705/PARKSIDE BLVD
 PEDESTRIAN BRIDGE

DRAWING No. **13-002**

MATCH LINE STA 109+00 - SEE DWG 13-003



MATCH LINE STA 109+00 - SEE DWG's 13-001 & 13-002

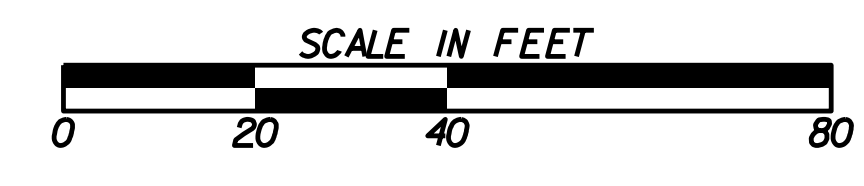
N 19°04'49" E SR 21/AUGUSTA ROAD

STA 112+00.00
SR 21/AUGUSTA ROAD
END PROJECT

NOTE: SEE SHEETS 11-002 TO 11-004 FOR PEDESTRIAN RAMP LAYOUT

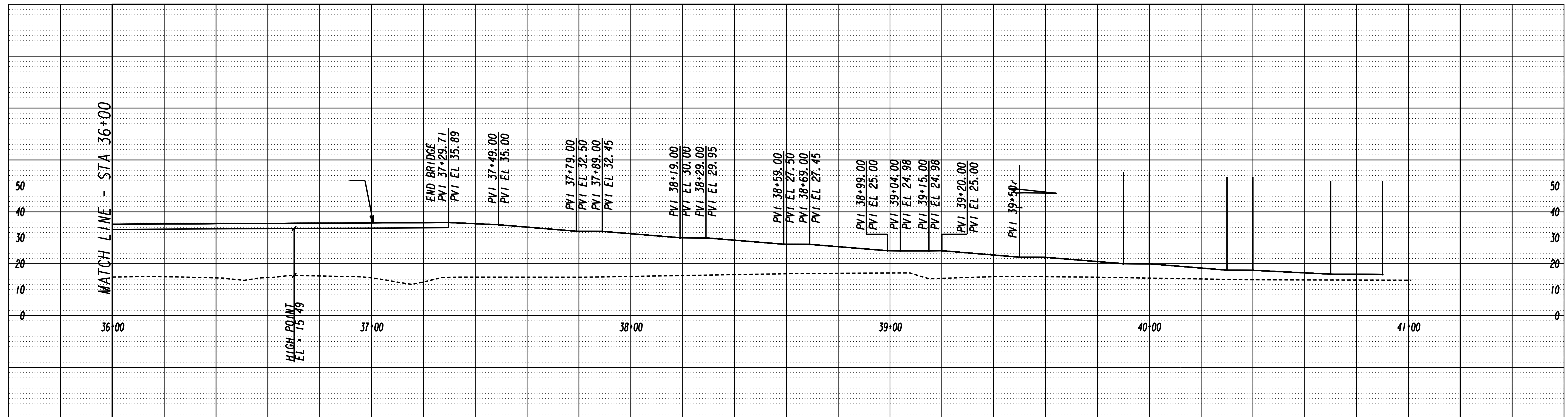
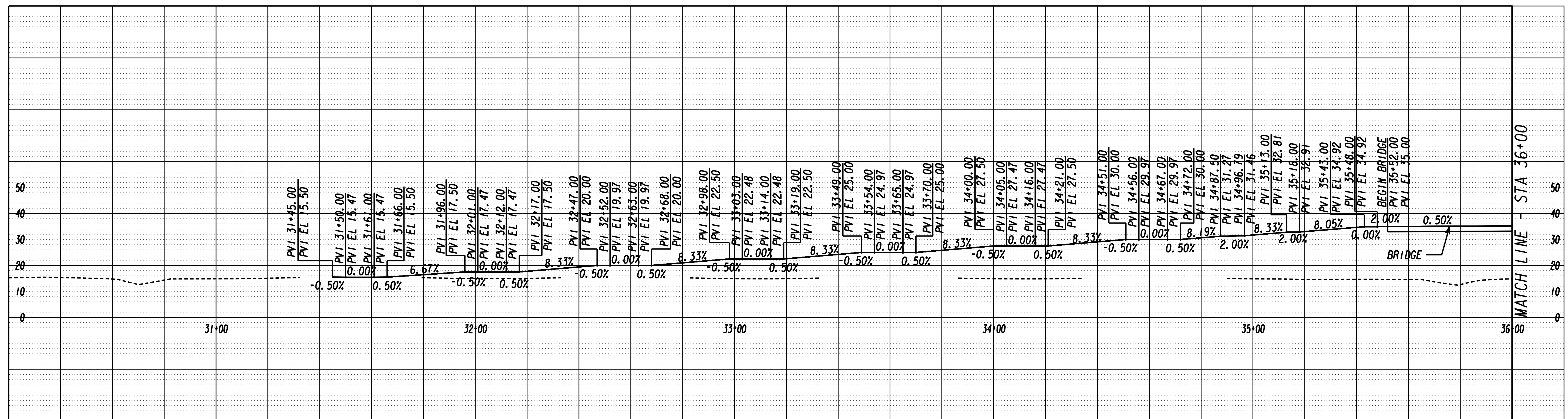
PROPERTY AND EXISTING R/W LINE	---
REQUIRED R/W LINE	---
CONSTRUCTION LIMITS	---
EASEMENT FOR CONSTR & MAINTENANCE OF SLOPES	---/---
EASEMENT FOR CONSTR OF SLOPES	---/---
EASEMENT FOR CONSTR OF DRIVES	---/---

BEGIN LIMIT OF ACCESS.....BLA	---
END LIMIT OF ACCESS.....ELA	---
LIMIT OF ACCESS	---
REQ'D R/W & LIMIT OF ACCESS	---



REVISION DATES	

STATE OF GEORGIA DEPARTMENT OF TRANSPORTATION	
OFFICE:	
MAINLINE PLAN	
SR 21 @ CS 705/PARKSIDE BLVD PEDESTRIAN BRIDGE	
DRAWING No.	13-003



SCALE: 1" = 20' HOR.
1" = 20' VERT.

REVISION DATES

DEPARTMENT OF TRANSPORTATION
STATE OF GEORGIA

OFFICE:
PEDESTRIAN RAMP & BRIDGE PROFILE

SR 21 @ CS 705/PARKSIDE BLVD
PEDESTRIAN BRIDGE

DRAWING No.
16-001

4/8/2016
bwebb

4:10:23 PM
sppf88
omeng.plt

G:\TRAN\64060_GEC\TO_B_Prog\W0_1_Ped_Bridge\SHEET\0013549_23-001.dgn

STATE	PROJECT NUMBER	SHEET NO.	TOTAL SHEETS
GA		12	18

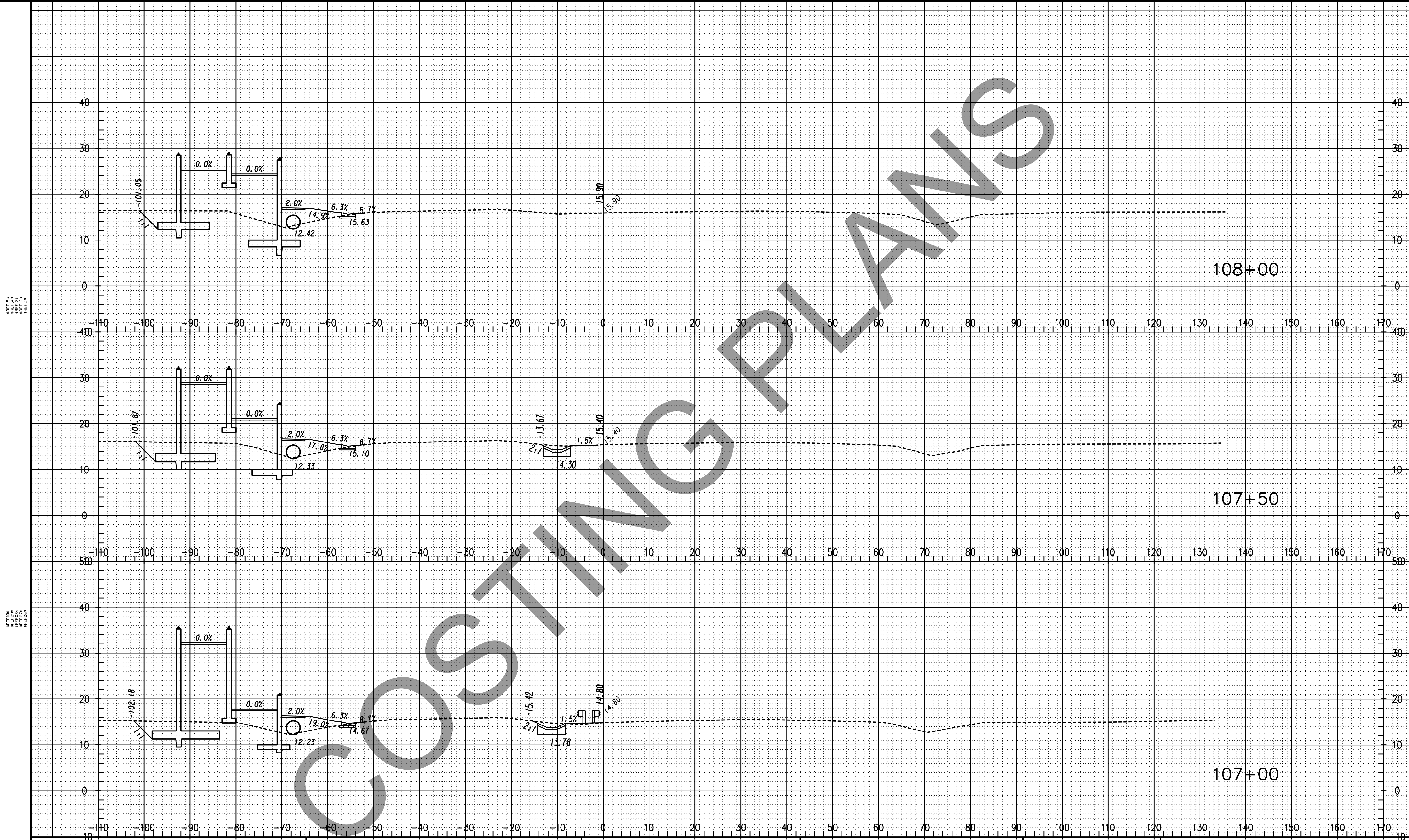


SCALE: 1" = 10' HOR.
1" = 10' VERT.

REVISION DATES	

STATE OF GEORGIA
DEPARTMENT OF TRANSPORTATION
OFFICE:
EARTHWORK CROSS SECTIONS
SR 21/AUGUSTA HWY
SR 21 @ CS 705/PARKSIDE BLVD
PEDESTRIAN BRIDGE

DRAWING No.
23-001



COSTING PLANS

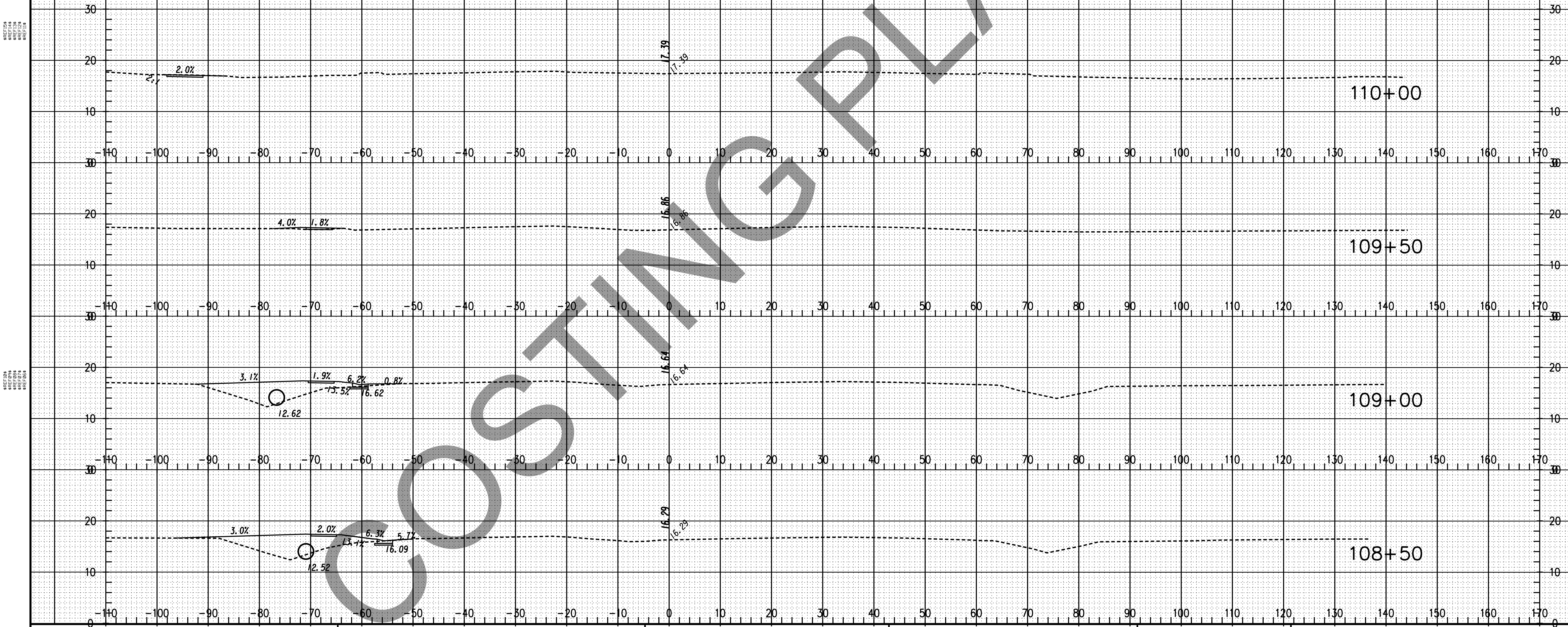


SCALE: 1" = 10' HOR.
1" = 10' VERT.

REVISION DATES	

STATE OF GEORGIA
DEPARTMENT OF TRANSPORTATION
OFFICE:
EARTHWORK CROSS SECTIONS
SR 21/AUGUSTA HWY
SR 21 @ CS 705/PARKSIDE BLVD
PEDESTRIAN BRIDGE

DRAWING No.
23-002



CROSSING PLANS

12/14/2012 GPLM



SCALE: 1" = 10' HOR.
1" = 10' VERT.

REVISION DATES	

STATE OF GEORGIA
DEPARTMENT OF TRANSPORTATION

OFFICE:
EARTHWORK CROSS SECTIONS
SR 21/AUGUSTA HWY
SR 21 @ CS 705/PARKSIDE BLVD
PEDESTRIAN BRIDGE

DRAWING No.
23-003

UTILITY LINECODES

EXISTING	TO BE REMOVED	PROPOSED	TYPE OF UTILITY
---E---	---E---	---E---	ELECTRIC
---E-T---	---E-T---	---E-T---	ELECTRIC/TELECOMMUNICATIONS
---E-TV---	---E-TV---	---E-TV---	ELECTRIC/CABLE TV
---E-TC---	---E-TC---	---E-TC---	ELECTRIC/TRAFFIC CONTROL
---E-T-TV---	---E-T-TV---	---E-T-TV---	ELECTRIC/TELECOMMUNICATIONS/CABLE TV
---E-T-TV-TC---	---E-T-TV-TC---	---E-T-TV-TC---	ELECTRIC/TELECOMMUNICATIONS/CABLE TV/TRAFFIC CONTROL
---E-TV-TC---	---E-TV-TC---	---E-TV-TC---	ELECTRIC/CABLE TV/TRAFFIC CONTROL
---E-T-TC---	---E-T-TC---	---E-T-TC---	ELECTRIC/TELECOMMUNICATIONS/TRAFFIC CONTROL
---GW---	---GW---	---GW---	GUY WIRE
---T---	---T---	---T---	TELECOMMUNICATIONS
---T-TC---	---T-TC---	---T-TC---	TELECOMMUNICATIONS/TRAFFIC CONTROL
---T-TV-TC---	---T-TV-TC---	---T-TV-TC---	TELECOMMUNICATIONS/CABLE TV/TRAFFIC CONTROL
---T-TV---	---T-TV---	---T-TV---	TELECOMMUNICATIONS/CABLE TV
---TV---	---TV---	---TV---	CABLE TV
---TV-TC---	---TV-TC---	---TV-TC---	CABLE TV/TRAFFIC CONTROL
---TC---	---TC---	---TC---	TRAFFIC CONTROL
---E---	---E---	---E---	ELECTRIC (OL-D)
---E(C)---	---E(C)---	---E(C)---	ELECTRIC (OL-C)
---E(B)---	---E(B)---	---E(B)---	ELECTRIC (OL-B)
---T---	---T---	---T---	TELECOMMUNICATIONS (OL-D)
---T(C)---	---T(C)---	---T(C)---	TELECOMMUNICATIONS (OL-C)
---T(B)---	---T(B)---	---T(B)---	TELECOMMUNICATIONS (OL-B)
---TV---	---TV---	---TV---	CABLE TV (OL-D)
---TV(C)---	---TV(C)---	---TV(C)---	CABLE TV (OL-C)
---TV(B)---	---TV(B)---	---TV(B)---	CABLE TV (OL-B)
---W---	---W---	---W---	WATER (OL-D)
---W(C)---	---W(C)---	---W(C)---	WATER (OL-C)
---W(B)---	---W(B)---	---W(B)---	WATER (OL-B)
---**W---	---**W---	===**W===	WATER FOR LABELED PIPE SIZES (OL-D)
---**W(C)---	---**W(C)---	===**W(C)===	WATER FOR LABELED PIPE SIZES (OL-C)
---**W(B)---	---**W(B)---	===**W(B)===	WATER FOR LABELED PIPE SIZES (OL-B)
---NW---	---NW---	---NW---	NON-POTABLE WATER (OL-D)
---NW(C)---	---NW(C)---	---NW(C)---	NON-POTABLE WATER (OL-C)
---NW(B)---	---NW(B)---	---NW(B)---	NON-POTABLE WATER (OL-B)
---**NW---	---**NW---	===**NW===	NON-POTABLE WATER FOR LABELED PIPE SIZES (OL-D)
---**NW(C)---	---**NW(C)---	===**NW(C)===	NON-POTABLE WATER FOR LABELED PIPE SIZES (OL-C)
---**NW(B)---	---**NW(B)---	===**NW(B)===	NON-POTABLE WATER FOR LABELED PIPE SIZES (OL-B)
---STM---	---STM---	---STM---	STEAM (OL-D)
---STM(C)---	---STM(C)---	---STM(C)---	STEAM (OL-C)
---STM(B)---	---STM(B)---	---STM(B)---	STEAM (OL-B)
---**STM---	---**STM---	===**STM===	STEAM FOR LABELED PIPE SIZES (OL-D)
---**STM(C)---	---**STM(C)---	===**STM(C)===	STEAM FOR LABELED PIPE SIZES (OL-C)
---**STM(B)---	---**STM(B)---	===**STM(B)===	STEAM FOR LABELED PIPE SIZES (OL-B)
---SS---	---SS---	---SS---	SANITARY SEWER WITH FLOW DIRECTION (OL-D)
---SS(C)---	---SS(C)---	---SS(C)---	SANITARY SEWER WITH FLOW DIRECTION (OL-C)
---SS(B)---	---SS(B)---	---SS(B)---	SANITARY SEWER WITH FLOW DIRECTION (OL-B)
---**SS---	---**SS---	===**SS===	SANITARY SEWER WITH FLOW DIRECTION FOR LABELED PIPE SIZES (OL-D)
---**SS(C)---	---**SS(C)---	===**SS(C)===	SANITARY SEWER WITH FLOW DIRECTION FOR LABELED PIPE SIZES (OL-C)
---**SS(B)---	---**SS(B)---	===**SS(B)===	SANITARY SEWER WITH FLOW DIRECTION FOR LABELED PIPE SIZES (OL-B)
---SFM---	---SFM---	---SFM---	SANITARY SEWER FORCE MAIN WITH FLOW DIRECTION (OL-D)
---SFM(C)---	---SFM(C)---	---SFM(C)---	SANITARY SEWER FORCE MAIN WITH FLOW DIRECTION (OL-C)
---SFM(B)---	---SFM(B)---	---SFM(B)---	SANITARY SEWER FORCE MAIN WITH FLOW DIRECTION (OL-B)
---G---	---G---	---G---	GAS (OL-D)
---G(C)---	---G(C)---	---G(C)---	GAS (OL-C)
---G(B)---	---G(B)---	---G(B)---	GAS (OL-B)
---**G---	---**G---	===**G===	GAS FOR LABELED PIPE SIZES (OL-D)
---**G(C)---	---**G(C)---	===**G(C)===	GAS FOR LABELED PIPE SIZES (OL-C)
---**G(B)---	---**G(B)---	===**G(B)===	GAS FOR LABELED PIPE SIZES (OL-B)
---P---	---P---	---P---	PETROLEUM (OL-D)
---P(C)---	---P(C)---	---P(C)---	PETROLEUM (OL-C)
---P(B)---	---P(B)---	---P(B)---	PETROLEUM (OL-B)
---**P---	---**P---	===**P===	PETROLEUM FOR LABELED PIPE SIZES (OL-D)
---**P(C)---	---**P(C)---	===**P(C)===	PETROLEUM FOR LABELED PIPE SIZES (OL-C)
---**P(B)---	---**P(B)---	===**P(B)===	PETROLEUM FOR LABELED PIPE SIZES (OL-B)
---TC---	---TC---	---TC---	TRAFFIC CONTROL (OL-D)
---TC(C)---	---TC(C)---	---TC(C)---	TRAFFIC CONTROL (OL-C)
---TC(B)---	---TC(B)---	---TC(B)---	TRAFFIC CONTROL (OL-B)
---UNK(B)---	---UNK(B)---	---UNK(B)---	UNKNOWN UTILITY FOUND IN SUE INVESTIGATION (OL-B)

FOR PROPOSED/TEMPORARY TRAFFIC CONTROL INFORMATION REFER TO TRAFFIC SIGNAL PLANS

UTILITY SYMBOLS

EXISTING	PROPOSED	TEMPORARY	EXISTING	PROPOSED	TEMPORARY	DESCRIPTION
⊕	⊕	⊕	⊕	⊕	⊕	CLEANOUT
⊙	⊙	⊙	⊙	⊙	⊙	SANITARY SEWER MANHOLE
⊙	⊙	⊙	⊙	⊙	⊙	AIR RELEASE VALVE
⊙	⊙	⊙	⊙	⊙	⊙	GREASE TRAP
⊙	⊙	⊙	⊙	⊙	⊙	SANITARY SEWER FORCE MAIN VALVE
⊙	⊙	⊙	⊙	⊙	⊙	GAS VALVE
⊙	⊙	⊙	⊙	⊙	⊙	GAS METER
⊙	⊙	⊙	⊙	⊙	⊙	GAS MANHOLE
⊙	⊙	⊙	⊙	⊙	⊙	GAS PRESSURE REGULATOR
⊙	⊙	⊙	⊙	⊙	⊙	GAS VAULT
⊙	⊙	⊙	⊙	⊙	⊙	GAS TEST STATION
⊙	⊙	⊙	⊙	⊙	⊙	PETROLEUM VALVE
⊙	⊙	⊙	⊙	⊙	⊙	TRAFFIC CONTROL MANHOLE/ELECTRIC COMMUNICATIONS BOX
⊙	⊙	⊙	⊙	⊙	⊙	TRAFFIC CONTROL PEDESTRIAN SIGNAL/BUTTON POST
⊙	⊙	⊙	⊙	⊙	⊙	MISCELLANEOUS
---	---	---	---	---	---	LOS
⊙	⊙	⊙	⊙	⊙	⊙	TH
⊙	⊙	⊙	⊙	⊙	⊙	EOI
⊙	⊙	⊙	⊙	⊙	⊙	+
⊙	⊙	⊙	⊙	⊙	⊙	123
⊙	⊙	⊙	⊙	⊙	⊙	A01
⊙	⊙	⊙	⊙	⊙	⊙	C123

QUALITY LEVELS AND DEFINITIONS
 OL-D DEPICTED ACCORDING TO UTILITY RECORD INFORMATION AND IN-FIELD VISUAL INSPECTION. NO ELECTRONIC DESIGNATING INFORMATION WAS OBTAINED.
 OL-C EXISTING UTILITY STRUCTURES HAVE BEEN FIELD LOCATED AND SURVEYED TO ASSIST IN DEPICTING THE UTILITIES SHOWN ON RECORDS. NO ELECTRONIC DESIGNATING INFORMATION WAS OBTAINED.
 OL-B INFORMATION WAS OBTAINED THROUGH THE APPLICATION OF APPROPRIATE SURFACE GEOPHYSICAL METHODS TO DETERMINE THE EXISTENCE AND APPROPRIATE HORIZONTAL POSITION OF THE SUBSURFACE UTILITIES. OL-B DATA SHOULD BE REPRODUCIBLE BY SURFACE GEOPHYSICS AT ANY POINT OF THEIR DEPICTION. THIS INFORMATION IS SURVEYED TO APPLICABLE TOLERANCES DEFINED BY THE PROJECT AND REDUCED ONTO PLAN DOCUMENTS.
 OL-A OBTAIN PRECISE HORIZONTAL AND VERTICAL POSITION OF THE UTILITY LINE BY EXCAVATING A TEST HOLE. THE TEST HOLE SHALL BE DONE USING VACUUM EXCAVATION OR COMPARABLE NONDESTRUCTIVE EQUIPMENT IN A MANNER AS TO CAUSE NO DAMAGE TO THE UTILITY LINE. AFTER EXCAVATING A TEST HOLE, A FIELD SURVEY SHALL BE PERFORMED TO DETERMINE THE EXACT LOCATION AND POSITION OF THE UTILITY LINE.

TELEPHONE PAIR SIZE TABLE

TELEPHONE PAIR SIZE	TELEPHONE CABLE DIAMETER
5 - 100	0.50 TO 2.00 IN
101 - 2400	UP TO 3.50 IN



REVISION DATES

STATE OF GEORGIA
 DEPARTMENT OF TRANSPORTATION

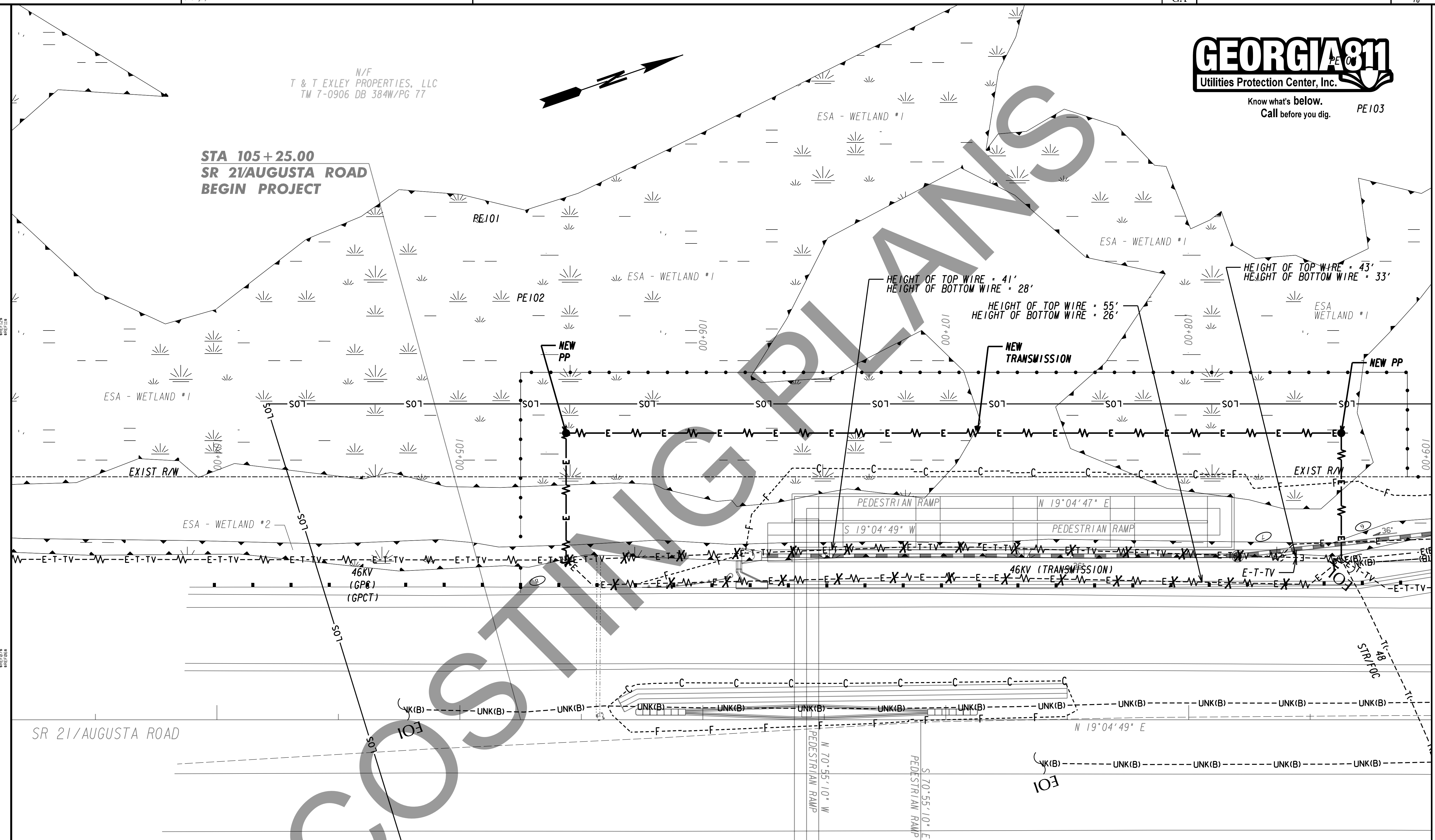
OFFICE:
UTILITY PLANS
LEGEND
 SR 21 @ CS 705/PARKSIDE BLVD
 PEDESTRIAN BRIDGE



Know what's below.
Call before you dig. PE103

N/F
T & T EXLEY PROPERTIES, LLC
TM 7-0906 DB 384W/Pg 77

STA 105+25.00
SR 21/AUGUSTA ROAD
BEGIN PROJECT



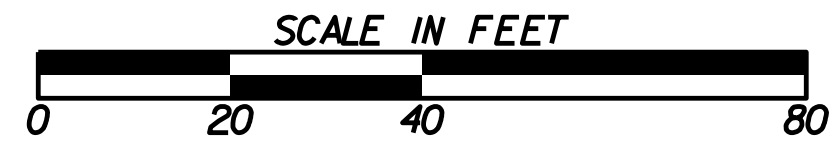
MATCH LINE STA 109+00 - SEE DWG 24-003

MATCH LINE STA 30+50 - SEE DWG 24-002

NOTE: SEE SHEETS 11-002 TO 11-004 FOR PEDESTRIAN RAMP LAYOUT

PROPERTY AND EXISTING R/W LINE	---
REQUIRED R/W LINE	---
CONSTRUCTION LIMITS	---
EASEMENT FOR CONSTR & MAINTENANCE OF SLOPES	---/---
EASEMENT FOR CONSTR OF SLOPES	---/---
EASEMENT FOR CONSTR OF DRIVES	---/---

BEGIN LIMIT OF ACCESS.....BLA	---
END LIMIT OF ACCESS.....ELA	---
LIMIT OF ACCESS	---
REQ'D R/W & LIMIT OF ACCESS	---



REVISION DATES	

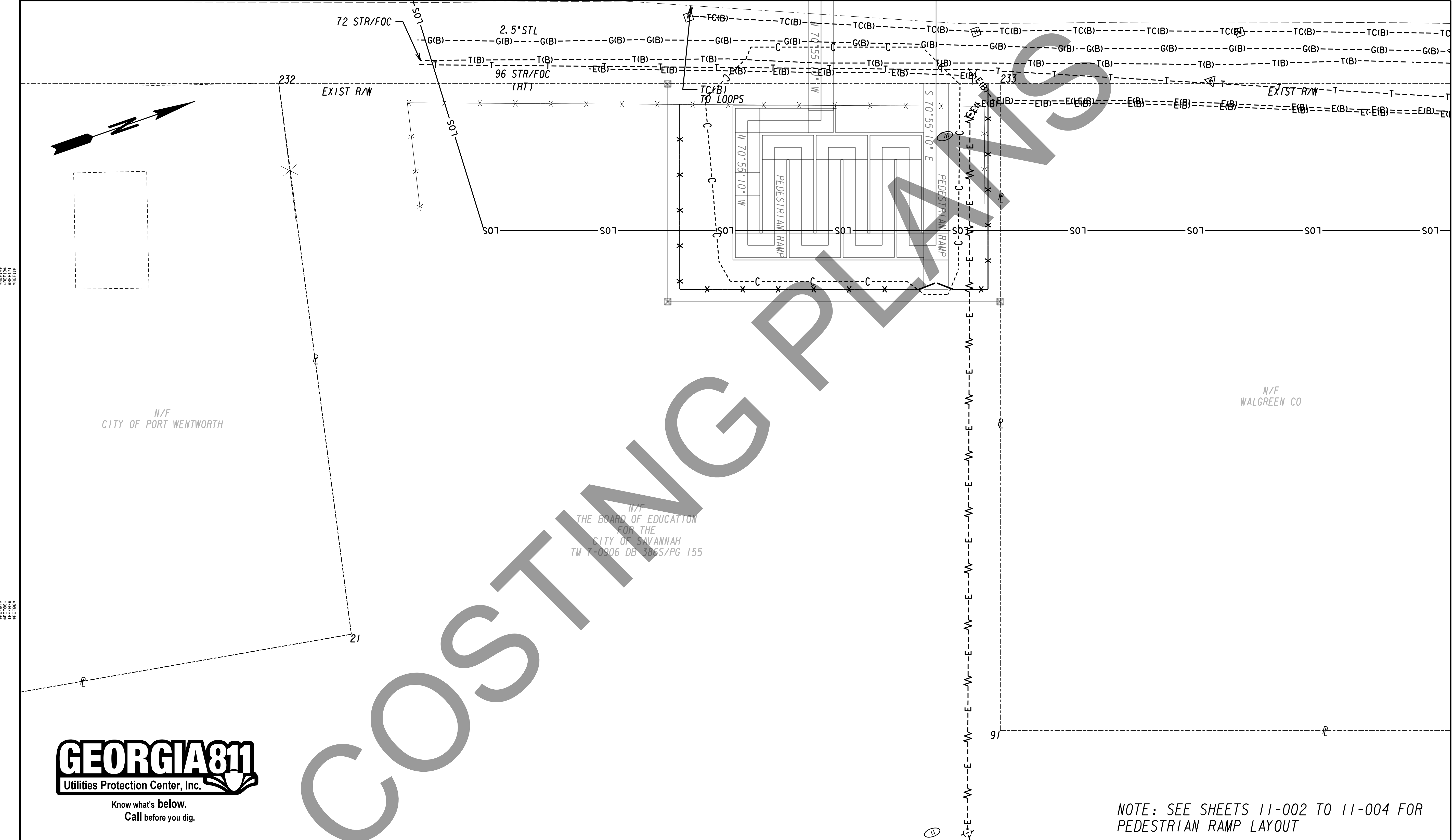
STATE OF GEORGIA
DEPARTMENT OF TRANSPORTATION

OFFICE: **UTILITY PLANS**

SR 21 @ CS 705/PARKSIDE BLVD
PEDESTRIAN BRIDGE

DRAWING No.
24-001

MATCH LINE STA 30+50 - SEE DWG 24-001



MATCH LINE STA 109+00 - SEE DWG 24-003



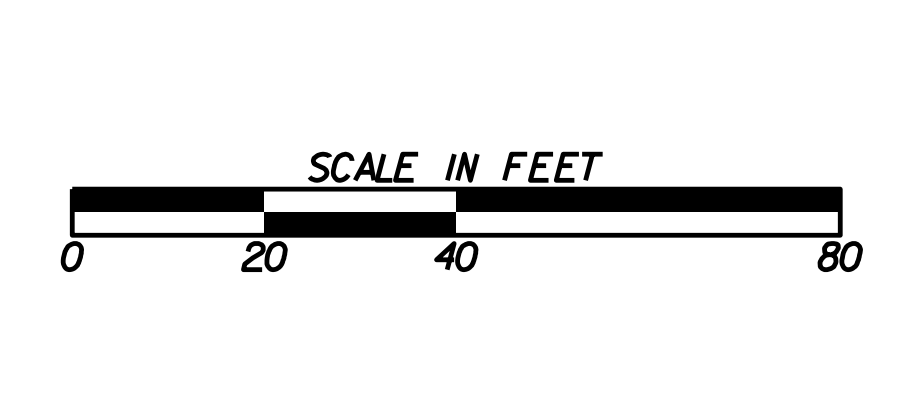
Know what's below.
Call before you dig.

COSTING PLANS

NOTE: SEE SHEETS 11-002 TO 11-004 FOR PEDESTRIAN RAMP LAYOUT

PROPERTY AND EXISTING R/W LINE	---
REQUIRED R/W LINE	---
CONSTRUCTION LIMITS	---
EASEMENT FOR CONSTR & MAINTENANCE OF SLOPES	▨
EASEMENT FOR CONSTR OF SLOPES	▩
EASEMENT FOR CONSTR OF DRIVES	▧

BEGIN LIMIT OF ACCESS.....BLA	---
END LIMIT OF ACCESS.....ELA	---
LIMIT OF ACCESS	---
REQ'D R/W & LIMIT OF ACCESS	---



REVISION DATES	

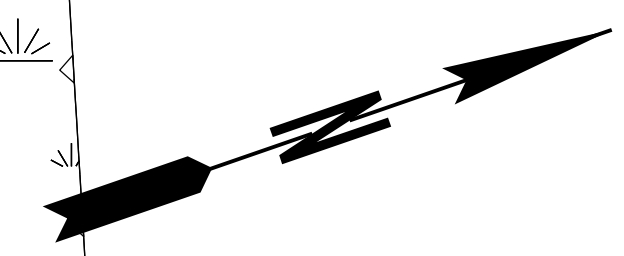
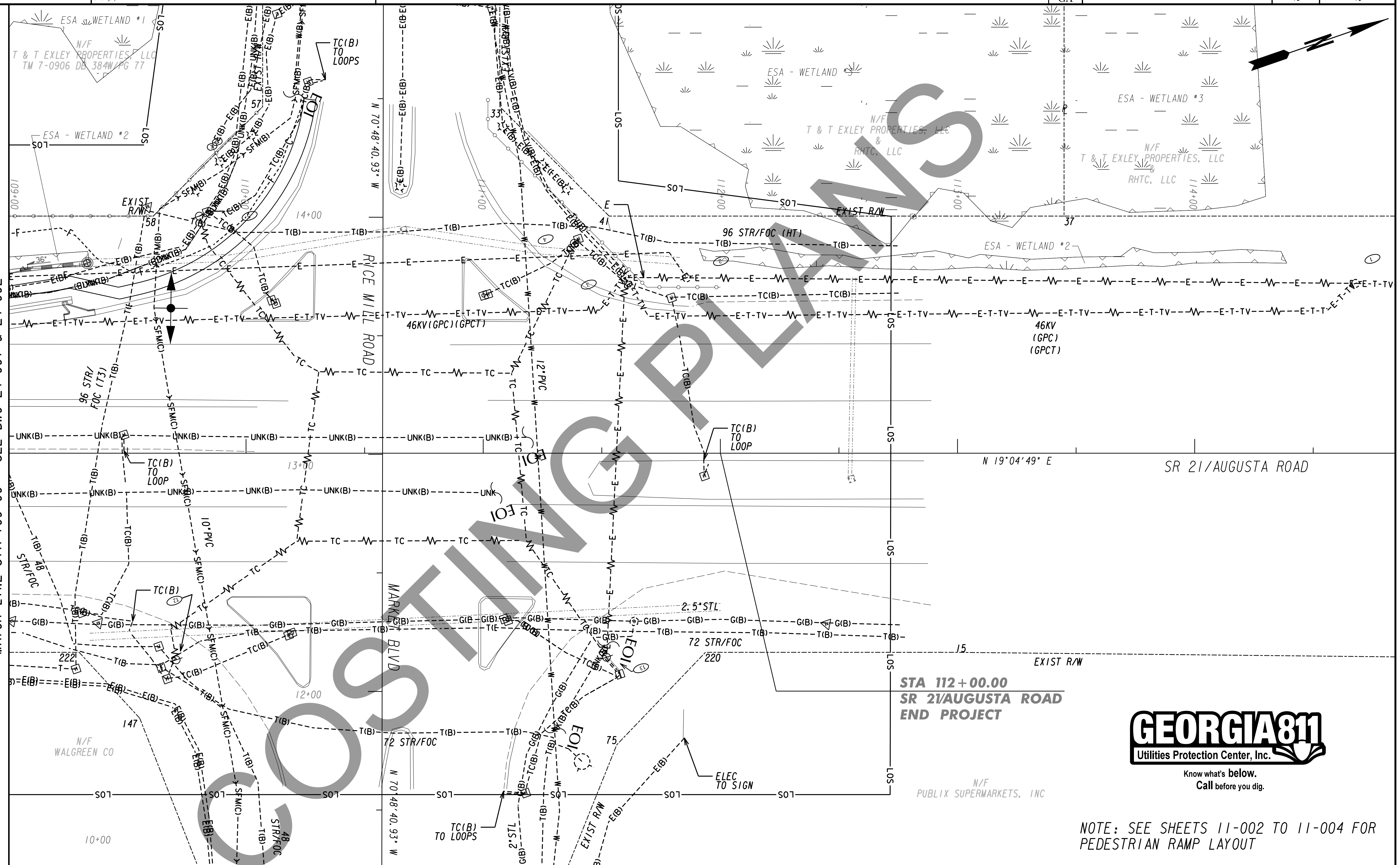
STATE OF GEORGIA
DEPARTMENT OF TRANSPORTATION

OFFICE:
UTILITY PLANS

SR 21 @ CS 705/PARKSIDE BLVD
PEDESTRIAN BRIDGE

DRAWING No.
24-002

MATCH LINE STA 109+00 - SEE DWG 24-001 & 24-002

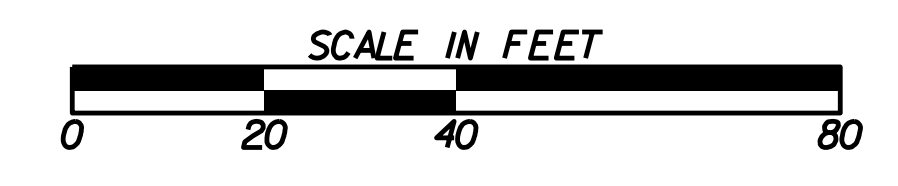


Know what's below.
Call before you dig.

NOTE: SEE SHEETS 11-002 TO 11-004 FOR PEDESTRIAN RAMP LAYOUT

PROPERTY AND EXISTING R/W LINE	---
REQUIRED R/W LINE	---
CONSTRUCTION LIMITS	---
EASEMENT FOR CONSTR & MAINTENANCE OF SLOPES	▨
EASEMENT FOR CONSTR OF SLOPES	▩
EASEMENT FOR CONSTR OF DRIVES	▧

BEGIN LIMIT OF ACCESS.....	BLA
END LIMIT OF ACCESS.....	ELA
LIMIT OF ACCESS	---
REQ'D R/W & LIMIT OF ACCESS	▨



REVISION DATES	

STATE OF GEORGIA DEPARTMENT OF TRANSPORTATION	
OFFICE: UTILITY PLANS	
SR 21 @ CS 705/PARKSIDE BLVD PEDESTRIAN BRIDGE	
DRAWING No.	24-003